

QUICK GUIDE

Senti + Sentiero Noah Connector

1. SCOPE

This document describes how to install and run the fully integrated PATH MEDICAL Noah module *Senti + Sentiero Noah Connector*.

2. PREREQUISITES

Noah System is installed and functional/licensed. Version 4.9 or greater is recommended.

3. INSTALLATION

1. Run the setup file *PathNoahConnectorSetup-x.y.z.abcd.exe* (with x.y.z.abcd being the software version, e.g. 1.0.0.7620)
2. Follow the installation wizard until the installation process finishes successfully.
3. Connect a device to complete the FTDI Chip driver installation. This may take several minutes.

4. USING THE MODULE

In Noah, a PATH MEDICAL button is shown that will start the module.

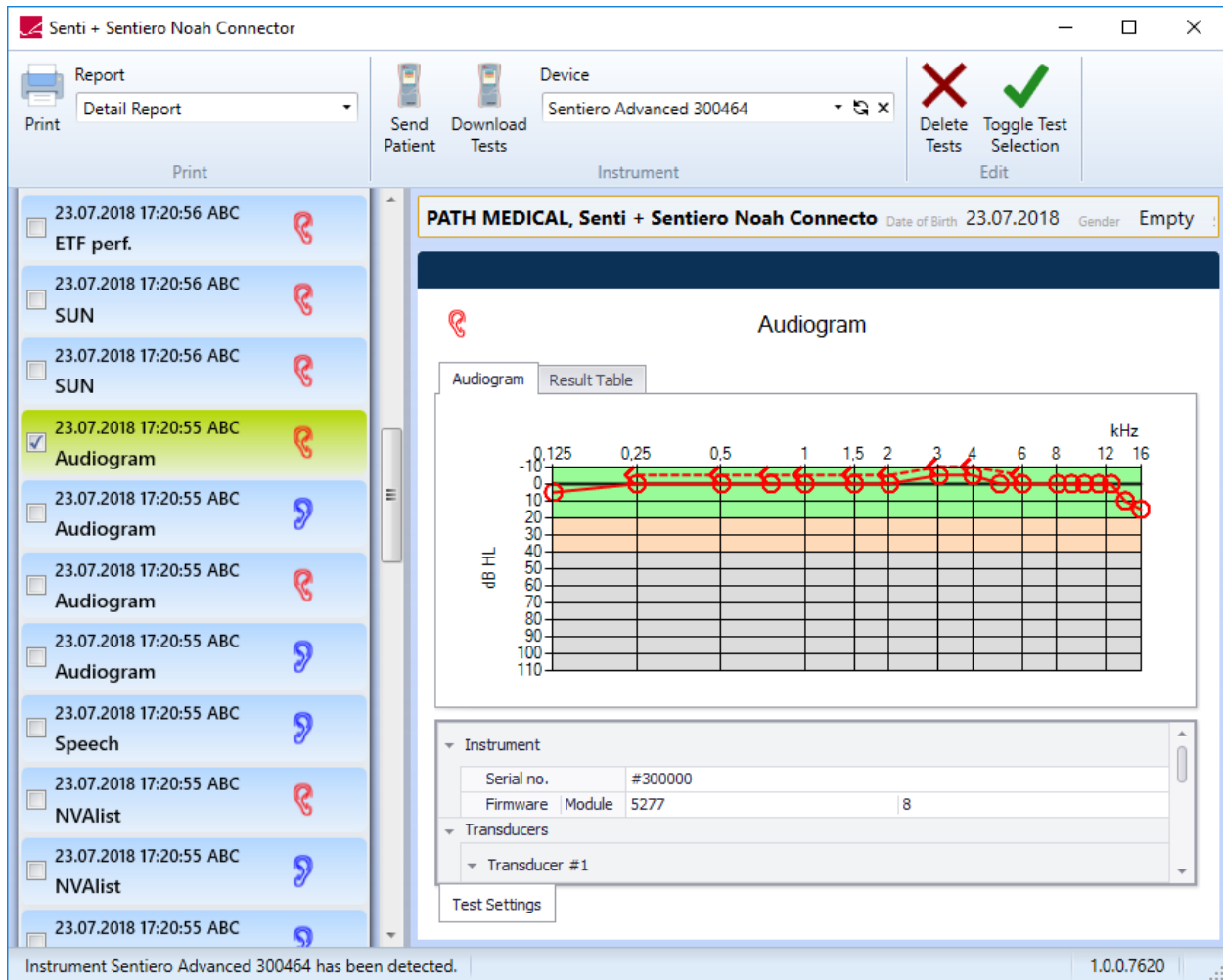
The screenshot displays the Noah 4 software interface. The top menu bar includes File, Edit, View, Setup, and Help. Below the menu is a toolbar with various modules: Audiogram Module, Journal Module, Noah aud, SAMPLE, Noah fit, OTOsuite otometrics, Primus, and Questionnaire Module. The main window title is "PATH MEDICAL, Demo Data ()" with patient information: Born 08.Jul.1970(47), Gender, and Soc. Sec. No. The interface is divided into several panels:

- Patient Browser:** A search area with "Search Patients" and "Advanced search" buttons. A table lists patients with columns for "First name" and "Last name". The "Demo Data" row is highlighted, showing "PATH MEDICAL".
- Latest Audiogram:** A graph titled "14.Dez.2017 : Senti + Sentiero" showing frequency (125, 250, 500, 1k, 2k, 4k, 8k, 16k) on the x-axis and decibels (-10 to 120) on the y-axis. The graph shows hearing levels for both ears.
- Sessions:** A list of sessions with dates and recording types:
 - 14.Dez.2017 : neu DpoeDiagnosticRecord, neu MireRecord, neu CdPlayerRecord
 - 13.Dez.2017 : neu BasdRecord, neu MagicScreenRecord, neu PtaRecord, neu MagicAudioRecord, neu PtaRecord
 - 25.Apr.2016 : neu PtaRecord
 - 05.Apr.2016 :
- Devices:** A section for "Right ear:" and "Left ear:" with a dropdown menu.
- Contact Information:** A section for patient contact details.

The status bar at the bottom shows "User: neu Server: VS-DESKTOP Patient: PATH MEDICAL, Demo Data".

QUICK GUIDE

Senti + Sentiero Noah Connector



The window consists of 4 main parts:

1. Menu bar in the upper part
2. List of measurements at the left side
3. Test result viewer at the right side
4. Demographic data of the selected patient between menu bar and test result viewer.

From the menu bar the following functions are available:

- Selecting a specific report type and printing selected tests
- Sending demographic data to a device to start a measurement
- Download tests and store new tests in the Noah database
- Selecting the device to be used, initiate a new device search
- Deletion of selected tests, toggle of test selection

QUICK GUIDE

Senti + Sentiero Noah Connector

The status bar shows information on device communication and the software version.

Detailed information on the measurement methods and result viewer are shown in the *How-To-Manual* (<https://pathme.de/support/#manuals>) and are available from the learning section of the website: <https://pathme.de/learn/>

5.UNINSTALLING

Open Apps & Features in Windows Settings or Programs & Features from the Control Panel select PATH Noah Connector and choose uninstall.

6.KNOWN ISSUES:

Some message boxes may be partially or completely hidden from the splash screen. If in doubt, place the mouse on the corresponding icon from the task bar to see if there is a hidden message box and use the "X" to close it.

If the automated FTDI Chip driver installation fails, manually run *CDM21228_Setup* that can be found here: http://www.ftdichip.com/Drivers/CDM/CDM21228_Setup.zip

QUICK GUIDE

Senti + Sentiero Noah Connector

Quick Guide Information

Release date: 2018-07-30
Revision: 01
Valid from: Firmware Rev. 2.4
Applies to: All devices

All mentioned items, products, brands and trademarks are registered or owned by the mentioned companies.

All information, illustrations, and specifications provided within this manual are based on the latest product information available at the time of publication. PATH medical reserves the right to make changes at any time without notice.

Please note that not all products displayed on our webpage or advertising materials are available in all territories. Please contact your local distributor or PATH medical for further information.

The latest revision of the Quick Start Guide is available online at www.pathme.de/download.

Errors and omissions excepted.

Copyright Notice

No part of this manual may be reproduced, translated, stored, or transmitted, in any form or by any means, electronic, mechanical, photocopying, recording, or otherwise, without the prior written consent of PATH medical GmbH.

Copyright © 2018 PATH medical GmbH

PATH medical GmbH
Landsberger Straße 65
82110 Germering
Germany

Tel.: +49 89 800 76 502 Fax: +49 89 800 76 503 Internet: www.pathme.de



0124